





GEOGNOSIA



Geognosia offers **international consulting** and **services in geophysics and topography**, providing any or all the services as the client demands. Avoiding "fashion", our aim is empirical exploration geophysics through rigorous project evaluation. We propose the best methodology, carefully considering limitations to each individual method, local constraints (geological or logistics) and costs.

We offer a previous approach to recommend the most suitable methodology and set-up for each case based on close to 20 years of experience.

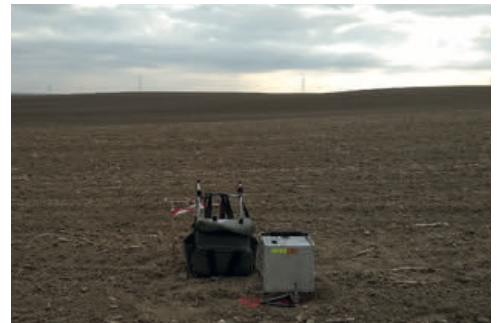
We provide the following geophysical methods:

- Gravity and Topography
- Magnetometry
- Induced Polarization IP
- Electromagnetics – Frequency Domain and Transient EM (AMT, CSAMT and TEM)
- GPR

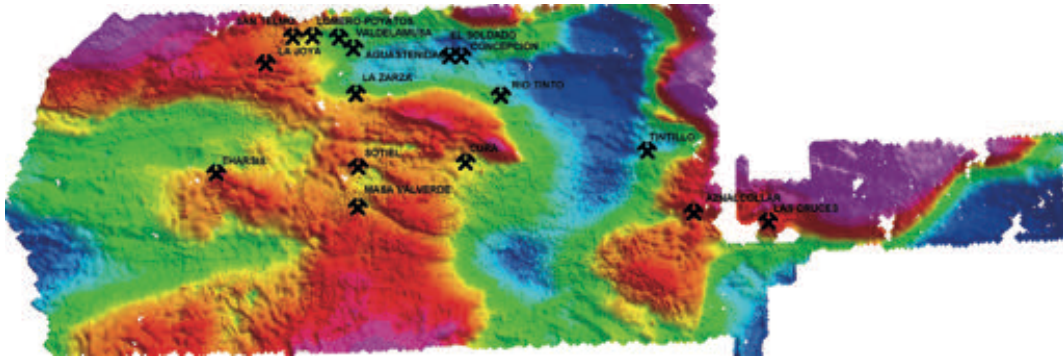
Survey design, processing and interpretation combined with geological mapping and/or topography when demanded.

Expertise

Our strong field-expertise is on mining exploration, for private companies and Governmental Institutions such as IGME (Mining and Geological Bureau of Spain); LNEG (Portuguese Geological Survey). Other areas of performance are geothermal, hydrogeology and geo-radar applied to archaeology and geotechnics.



Any survey will have a strict control of the projections systems used and will be entered into a georeferenced database.



We use innovative field setups, especially in methods like gravity, magnetics, Induced Polarization and electromagnetic surveys as CSAMT, AMT, TEM...

R+D Projects



Geognosia attaches great importance to innovation, for this reason has participated in several European R&D projects

Geognosia has participated in **INFACIT** (Horizon 2020 project that has finalized last January) as a leader of one of the technical WPs and NOW is participating in an ERAMIN 2 project called **AMTEG**, with Supracon as leader of this project.

Geognosia is Authorised Reseller of
GEM Systems in Spain.





GEOGNOSIA



+34 959555070
+34 620972826



geognosia@geognosia.com



Diseminados Los Campillos nº8,
21600 Valverde del Camino, Spain